

KeContact P20

Firmware update instructions

This manual gives the necessary information how to update the firmware of a KeContact P20 Charging station (wallbox).



The firmware update procedure may only be performed by qualified personnel (experts). Pay attention to the handling instructions and safety notes in the “KeContact P20 Installation manual”!



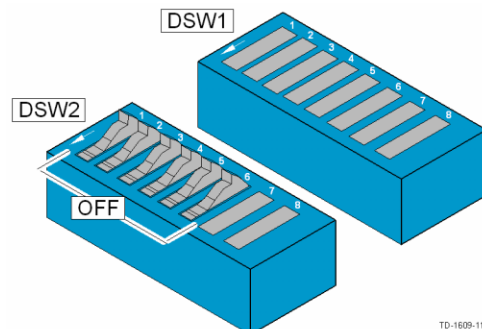
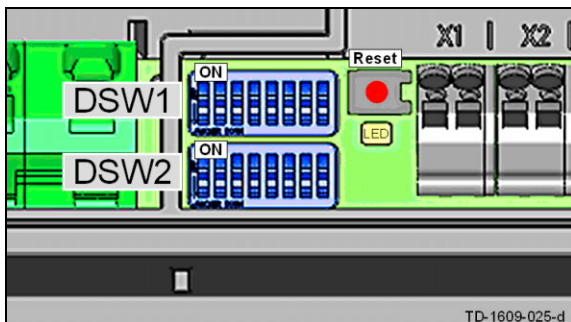
Notes

A firmware update does not require a renewed teaching of cards with installed RFID option.

If the KeContact P20 is already connected to a network, the firmware update can be done via local network also. In this case no DIP-switch changes are necessary, you only have to perform the firmware update (step 4).

General firmware update procedure

1. Open the connector panel to get access to the Ethernet connector ETH2.
2. Configure all DIP-switches DSW2.1 to DSW2.6 to OFF (DHCP) and perform a reset of the Charging station by pressing the reset button for one second. Remember to note down the original settings of the Wallbox.

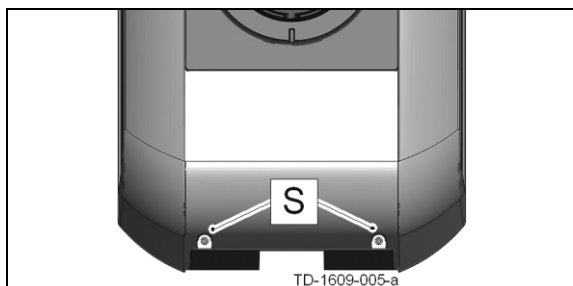


3. Computer configuration: Your computer has to be configured to use DHCP. A description for Win XP and Win7 can be found on the following pages.
4. Perform the firmware update using a standard RJ45 patch cable and connect the ETH2 (debug) port of the Charging station to the Ethernet port of your computer. It can last up to one minute, to get a functioning connection between computer and the charging station.

Extract all update files into a directory of your computer; e.g. "C:\P20FW". Do not use folder names with special characters such as "(" or ")".

Start the "**p20flash.cmd**" program in the windows explorer shell and follow the instructions. The firmware update starts immediately!
5. Restore settings: Set the IP address of the Wallbox back to the old settings.
6. Close the Wallbox and check the proper functionality.

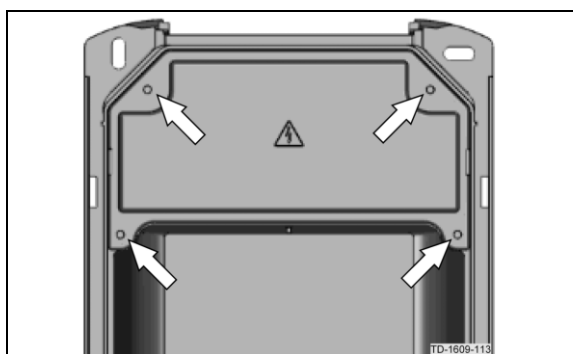
1 Opening the connector panel



Cover screws

Cover screws

- ➔ Unscrew the two cover screws **[S]** on the bottom side of the housing cover.
- ➔ Remove the housing cover.

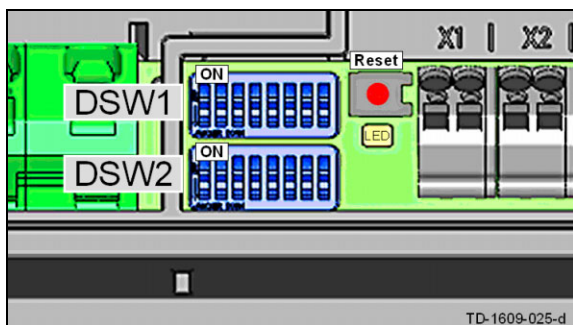


Removing the connector panel cover

Removing the connector panel cover

- ➔ Unscrew the four screws with which the connector panel cover is mounted and remove the connector panel cover.

2 Configure the DIP-switches



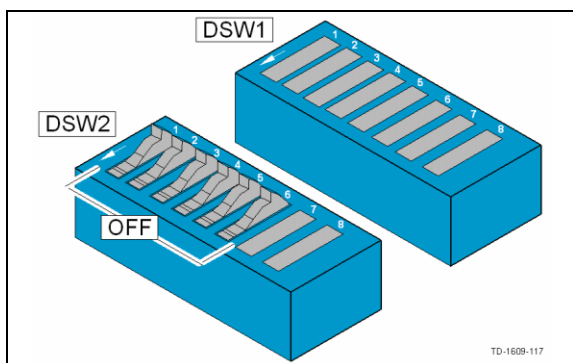
DIP-switches

DIP-switches

The DIP-switches are used for the addressing and configuring the charging station and are located under the connector panel cover.

[DSW1]...configuration (upper DIP-switch)

[DSW2]...addressing (lower DIP-switch)



DSW2

Addressing the Charging station

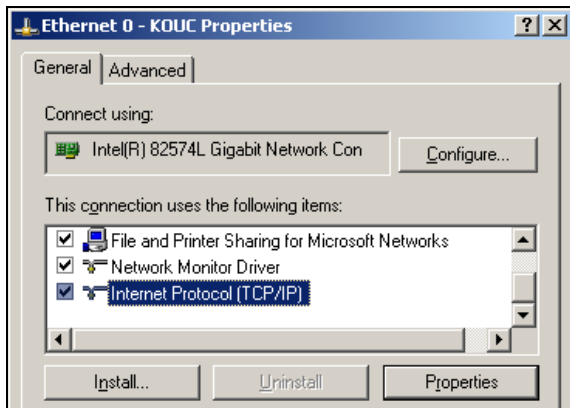
- ➔ Set the DIP switches **DSW2.1 to DSW2.6 to OFF** (Charging station is configured to "Standard Mode + DHCP").

Do not change the other DIP-switches!

- ➔ Perform a reset of the Charging station. To do this, press the [Service button] for 1 second or switch the mains supply off/on.

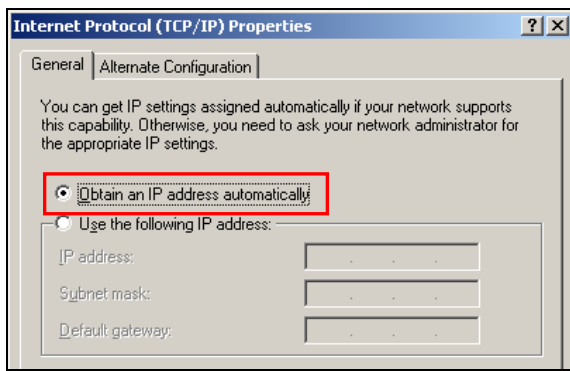
3 Computer configuration (DHCP)

DHCP configuration under Windows XP



Ethernet LAN connection settings

- ➡ Open the properties-page of the used Windows® LAN adapter (Network connections -> LAN connection -> Properties).
- ➡ Select "Internet Protocol (TCP/IP)" and press the [Properties] button.

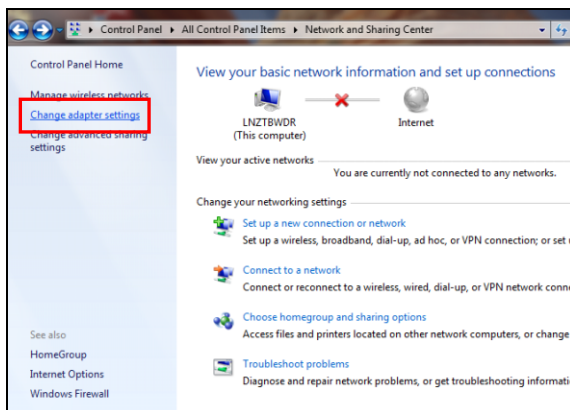


Internet Protocol (TCP/IP) Properties

- ➡ Check whether "Obtain an IP address automatically" is selected.

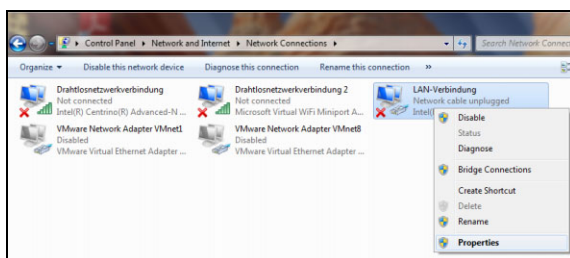
Please notice the previous IP settings, to be able to return to the initial state after the firmware update.

DHCP configuration under Windows 7



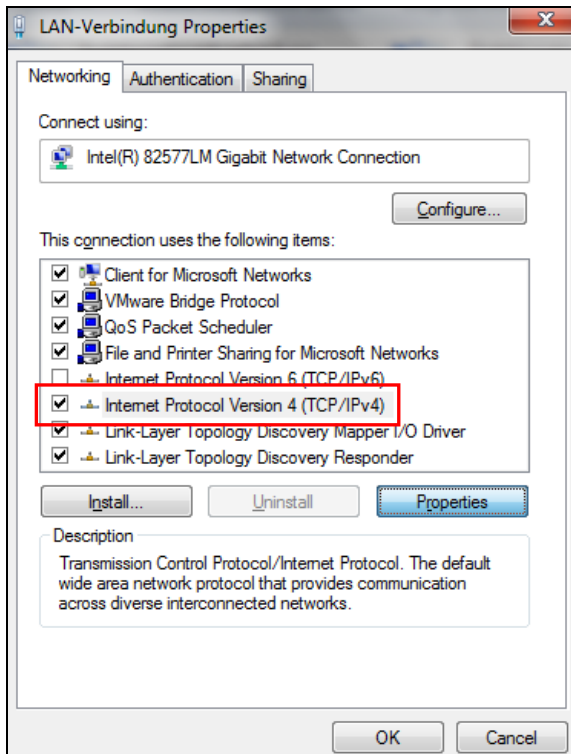
Windows 7 Control Panel

- ➡ Open the Windows 7 Control Panel and select the „Network and Sharing Center“.
- ➡ Press "Change adapter settings".



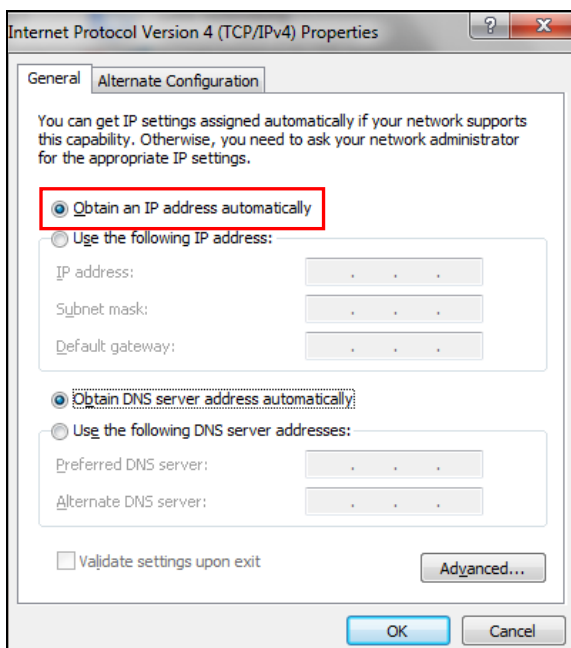
LAN Adapter settings

- ➡ Select the used LAN connection and open the „Properties“ page.



Ethernet LAN connection settings

- ➔ Select "Internet Protocol Version 4 (TCP/IPv4)" and press the [Properties] button.



Internet Protocol (TCP/IPv4) Properties

- ➔ Check whether "Obtain an IP address automatically" is selected.

Please notice the previous IP settings, to be able to return to the initial state after the firmware update.

4 Performing the firmware update

- ➡ Use a standard RJ45 patch cable and connect the ETH2 (debug) port of the Charging station to the Ethernet port of your computer.

Note: It can last up to 1 minute, to get a functioning network connection between computer and Charging station.

- ➡ Extract all update files into a directory of your computer; e.g. "C:\P20FW". Do not use folder names with special characters such as "(" or ")".

- ➡ Start the "**p20flash.cmd**" program in the windows explorer shell and follow the instructions. The firmware update starts immediately!

In some cases you might have to deactivate the Windows firewall OR add the program "**e2flash.exe**" as an allowed exception (follow the firewall display messages).

The program searches for the connected Charging stations for up to 40 seconds and shows its MAC address, IP address and the firmware version information.

```
P20 flash utility v1.60 (C) KEBA AG Linz, Austria
Using KEBA Ethernet Boot Loader Download Utility (Version: 11)
```

```
-----
Using firmware file 'kec_pdc.1.013a8.137.0.bin'
-----
```

```
Searching for connected devices ...
```

```
Found devices:
```

```
KC-P20 14937996 1.013a8 57 2131 28266
      00:60:B5:32:00:76 10.150.1.30 found on 10.150.1.4
-----
```

- ➡ Confirm the firmware programming task with [y] or press the [Enter]-key and wait until the update has finished.

```
-----
Start programming of found devices
```

```
+++++
```

```
KC-P20 14937996 1.013a8 57 2131 28266
      00:60:B5:32:00:76 10.150.1.30 found on 10.150.1.4
```

```
Program this device ([y]/n):
```

```
% Complete: 100%
```

```
-----
```



The update utility will search for connected devices again after all updates are finished.

Searching for connected devices after programming

Found devices after programming:

KC-P20 14937996 1.013a8 57 1256 33964
00:60:B5:32:00:76 10.150.1.30 found on 10.150.1.4

Append report to 'report.txt'

Programming device(s) successfully finished.



Notice

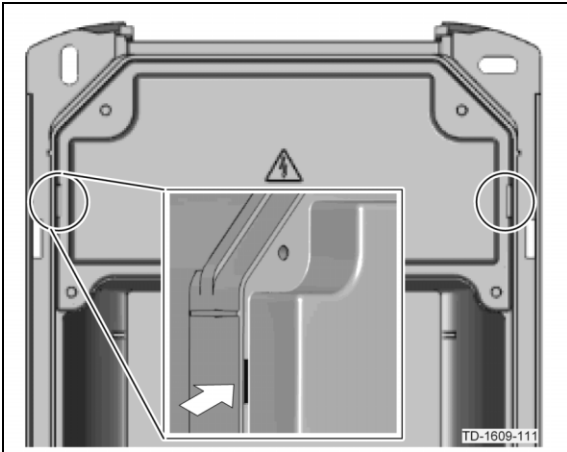
On some computers problems could occur with your network, firewall, port settings or other devices especially TFTP-servers.

To avoid problems you can connect the wallbox directly to your computer or switch off other devices like servers.

5 Restore settings

- ➔ Set the IP address of the Wallbox back to its old settings.

6 Closing the Wallbox

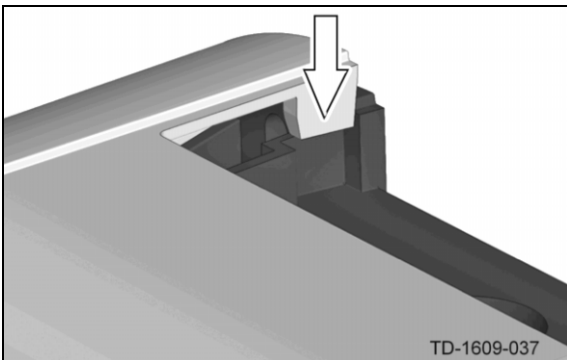


Housing mark

Housing mark

- ➔ Tighten the four screws until the mark on the connector panel cover is even with the housing surface.

The connector panel cover must seal the housing properly.

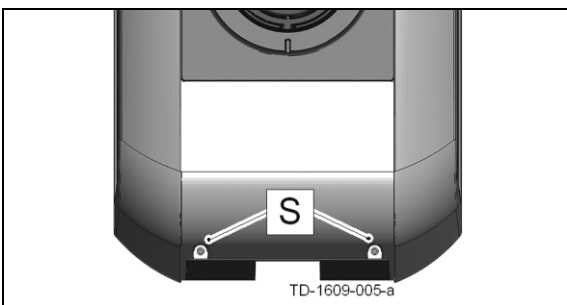


Fitting the housing cover

Fitting the housing cover

- ➔ Fit the housing cover at the top and push the cover downwards slightly.

Make sure that the housing cover is seated correctly at the top in the housing guides.



Cover screws

Cover screws

- ➔ Secure the housing cover at the bottom using the two cover screws **[S]**.

Function test

- ➔ Check the function of the Wallbox.